

STALL FOR GAUDEAMUS FAIR

The Tomas Bata University in Zlín decided to take a step forward in the promotion of the university and decided to attend the annual Gaudemus fair of third level educational institutions. As a promotional move they set a project for the Spatial Design Department to create an appropriate stall design that would not only represent the university but would also promote the town of Zlín.

My design was chosen by a panel of judges representing the faculty and university management. The design was used for the fair in 2004 and also with minor adjustments in 2005, and is planned to be used over the next four years.

The project requirements included a projection space, an eye-catching and original design, and some form of town representation. I took Zlín itself as the focal point for the stall, taking its distinct architecture and history as a base.

The town was built in the twenties and thirties for the Bata factory and its workers. It was constructed primarily from brick, in the international style. I combined this approach with the striking orange of the university logo to produce a bold and intriguing appearance.

I also wanted the projection area to be a key feature of the stall, resulting in a symbiosis of cinema space and information space. The seating arrangement in the 'cinema', together with the tables in the other half of the stall, is based on the regular urbanism of Zlín and mimics the city skyline. The city's characteristic red brick cuboid houses are represented by the seating cubes. The houses in the aerial photograph on one of the walls are thereby projected into the space.

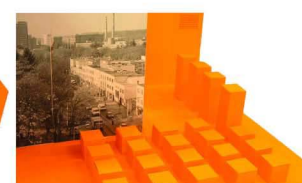
Text about the individual faculties is located behind the tables in the information space.



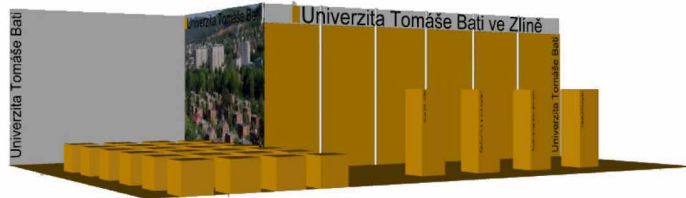
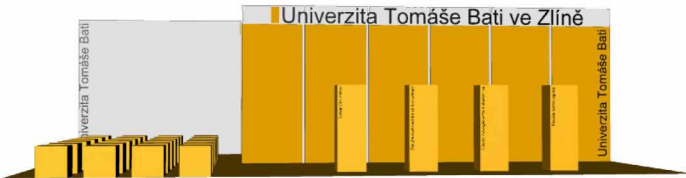
The actual stall at the fair



Model of original stall

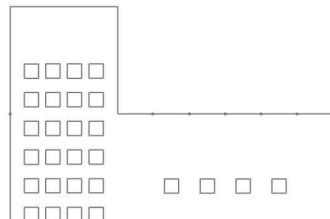
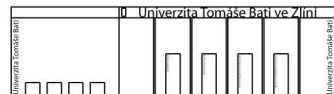


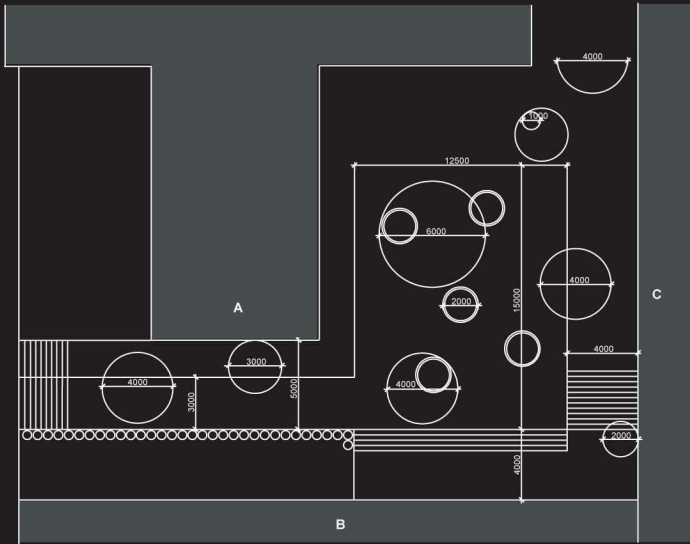
The revised version of the stall for 2005 was enlarged by 9 square metres and included an additional, newly-opened faculty. The projection was replaced by a plasma screen which displayed student works and films.



"Rhino" models of revised stall

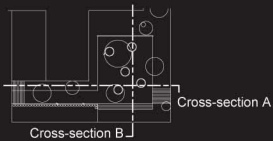
2005 revised version





Ground plan

- A** Spatial Design department building
- B** University cafeteria
- C** Graphic Design department building
- Stairs
- Light openings in terrace
- Hedge



Cross-section A



Cross-section B



Current state of atrium



Proposed terrace

ATRIUM

The space in question is an area that is currently neglected and unused apart from the path and employee entrance into a cafeteria with a fountain in disrepair. It is enclosed from all four sides by two faculty buildings and the university cafeteria with two narrow corridors leading into it.

My primary aim was to create a calm and unified relaxation area suitable for the university students. I also wanted to address the need for greater exhibition space, providing an area for students to show their work. This space could then become a forum for discussion and the exchange of ideas.

As the original terrain is sloping, I proposed to level it off, creating two natural levels joined by stairs. The proposal also included a third level to be constructed. The ground level of the atrium is to be used for exhibitions, partially-sheltered by the terrace level. Level two functions as a mezzanine, allowing secondary access to both the terrace and the lower exhibition space from the cafeteria. The third level is an elevated terrace, providing seating, and views of the exhibition space. The terrace floor features holes which allow those on the terrace to see down, while simultaneously allowing natural light into the exhibition space.

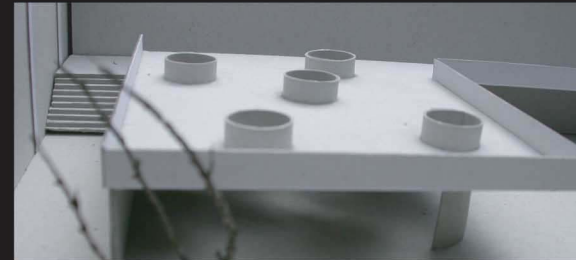
Additional circles will also be added to the floor and walls. These will be paved in light grey and blue pebbles to add colour and texture to the space.



A Japanese maple tree is to be planted in the atrium, adding further elements of warmth, colour and life to the space.



The terrace functions as a seating and gathering area. Art and design students are encouraged to express themselves by bringing their own seating. This means that the choice of colours in the atrium will be the students' own. However a limited number of seats are to be provided.



View of the exhibition space and natural lighting

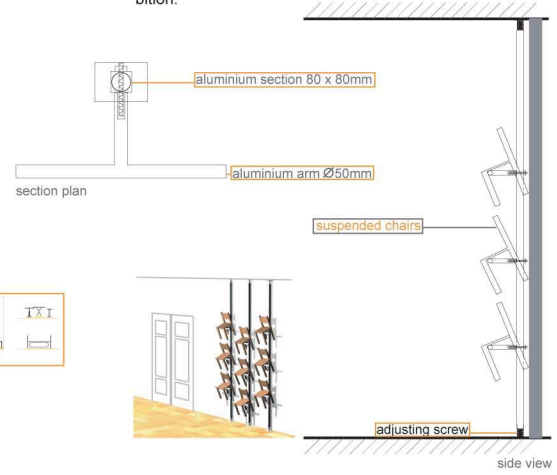
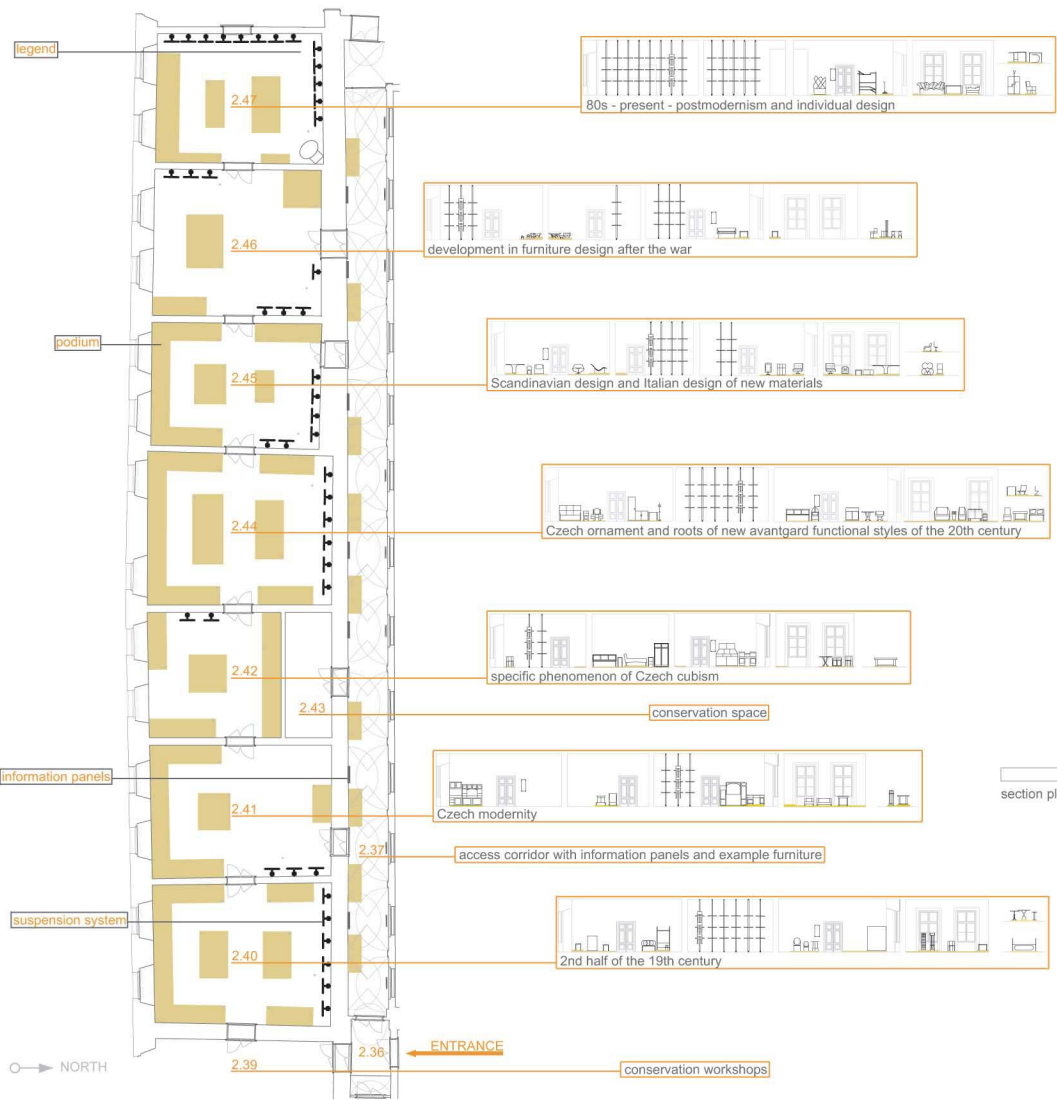
EXHIBITION DESIGN FOR THE MUSEUM OF DECORATIVE ARTS IN PRAGUE

The Museum of Decorative Arts in Prague was planning to open to the public its furniture depository spaces for educational purposes. This depository is found in the southern wing of the Kamenice castle in the village Kamenice nad Lipou.

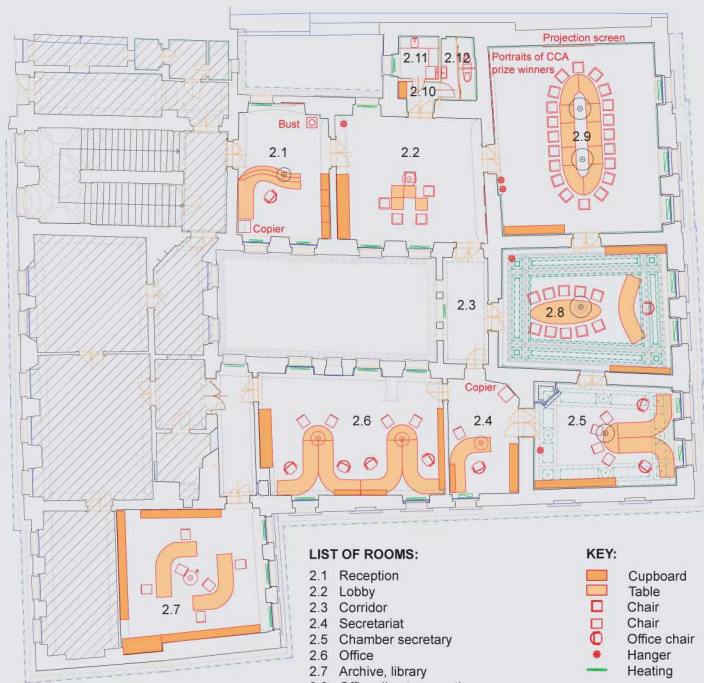
The project was very much limited by the budget, the space that was granted to the exhibition and more importantly by the structural problem that did not allow heavy weight in the middle of the rooms and heritage regulations that limited any interference with the walls and structure.

I proposed to use the height of the old castle rooms and give the educated public an opportunity to look at chairs closely from a different perspective. I developed a light suspension system for chairs and other small seating furniture that would line some of the walls. The remaining furniture would be placed onto podiums of varying heights around the room. The suspension system, together with the podiums were created to appear as simple as possible so that the furniture that was placed on it would get all the deserved attention.

The furniture was divided into the rooms according to the period and style that they represent and informative panels and detailed legends about the period or style and the individual pieces were an integral part of the educational exhibition.



○ → NORTH



Current state of interiors:



Reception



Lobby



Director's office



Office

INTERIORS OF THE CZECH CHAMBER OF ARCHITECTS

The Czech Chamber of Architects organised a competition for the interiors of their offices in Prague, with the hope of redesigning the space into a contemporary representation of their field.

The offices are located in a listed baroque building in the heart of the Lesser Town within walking distance of the Prague castle. The chamber required the proposal to take into consideration the various uses of the individual spaces, a new design for exhibitions that are regularly held in the lobby and a design for the layout of the large meeting room that is sometimes used as a lecture theatre.

My colleague and I based our proposal around the simplicity and functionality of the space. For easier office usage the director's office was moved to room 2.8 where a small meeting room is currently located, from room 2.7. In our proposal we combined the two functions and transformed room 2.7 into an archive, library and extra office space for the future expansion of the organisation.

The exhibition system proposed was a simple, mobile concept of glass screens on wheels that would fold away in a wardrobe in the lobby when not in use. The furniture was replaced by custom-made pieces in order to correspond with the unique spaces and the building as a whole. The material chosen for the furniture was cherry wood to match the authentic parquet flooring that is to be exposed and the white and grey wall paint.

Our proposal achieved fourth place in the competition and we received a special price for the submitted work. There was no winner and the organisation is to continue cooperating with two other proposals that were awarded joint second place. All the competition entries are to be exhibited in the lobby of the chamber in March and April 2008.



Reception



Lobby during exhibition



Lobby without exhibition



Large meeting room



Large meeting room converted into lecture theatre

FLAT RENNOVATION



Original state of bathroom



Bathroom renovation



Designer shower room



Designer tap and sink

Unique graphics all around the bathroom

A ground floor flat in a row of Victorian terraced houses in dire need of renovation and redecoration, with its very dated bathroom and kitchen units.

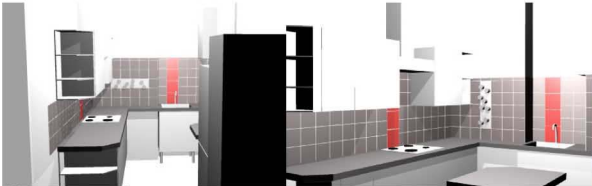
The redevelopment project was to match the lifestyle of a young dynamic couple on a very tight budget, where a lot of DIY was to play a major part. Hence the design focused on simple function with details that give the flat an all round high end finish.

The project was a very live one where plans had to be altered on the spot depending on the availability of labour, material and finances. A lot of cuts and alternative ideas had to be supplied as the budget was very restrained. However this proved to be a great learning challenge to work under pressure and think on your feet without compromising the final outcome.

The estimated profit of the property before the final stage of completion was set at £60 000 by two local estate agents. The budget for the project was initially £5 000 which was increased to £7 000 in the process.



Original state of kitchen



Kitchen renovation



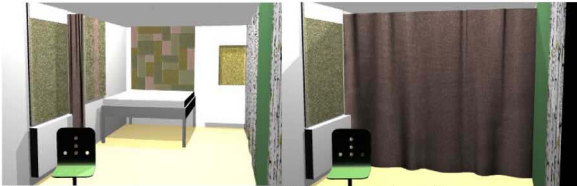
Breakfast bar

A new bathroom and kitchen had to be put in. A part of the bathroom was turned into a wet room as the owners are 'shower people' and not 'bath people'. White was chosen to make the small space feel bigger with large mirrors above the sink and on below the step to the shower. A radiator towel rail is the heat source in winter.

The colour scheme for the kitchen was white, dark grey/silver and deep red. Keeping the original floor boards which were painted white gives the space a clean finish and turned it into a central space of the flat.



Custom book shelves

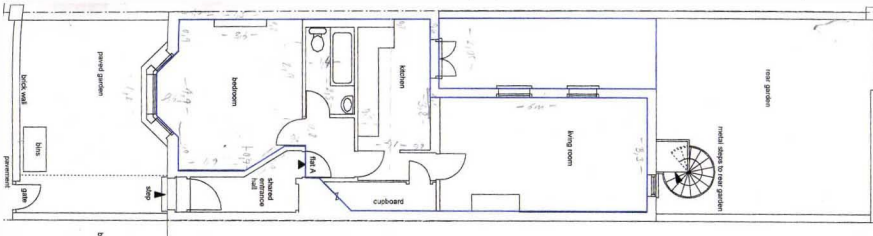


Bedroom proposal

Bedroom curtain partition

A natural calming feel was opted for the living room in coffee and cream colours and natural materials, predominantly wood, leather and textiles. Electronics are sunk into the chimney breast and a tv cover is used when the tv is not in use, which turns the object into an art piece.

The bedroom is left as an large open plan bedroom and study with the option of separating the two spaces by a floor to ceiling curtain partition.



Flat floor plan

FLAT RENOVATION



Original state of bathroom



Bathroom after renovation

BATHROOM:

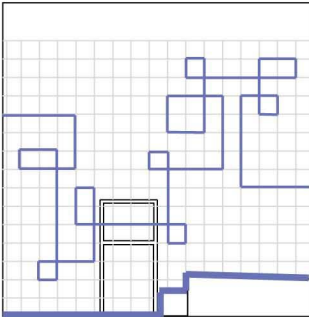
The modern contemporary look of the bathroom is achieved by the angular designer sink, toilet, tap and shower head. Together with this, the blue graphic line that runs around all the walls of the bathroom, a unique bathroom built to the users exact needs comes about.

The blue line is created by colouring waterproof groute.

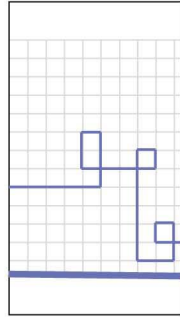
Shiny reflective surfaces together with the mirrors make the small bathroom bigger in appearance and more lively. xx mirror function

The shower room is built sloping to the far corner where the drain is located. Hence there is no need for any kind of step or water stopping method, only the glass screen.

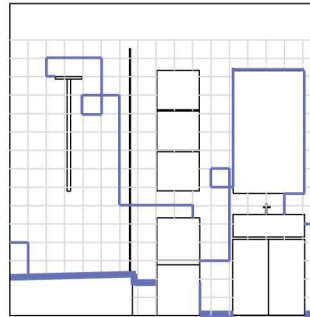
Original ideas and design solutions - shower platform, bespoke glass



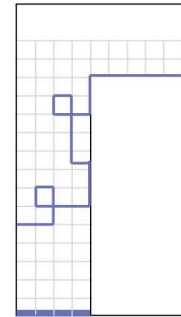
Plan of graphics on wall D



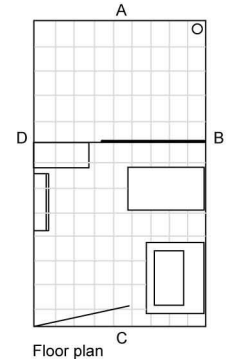
Plan of graphics on wall A



Plan of graphics on wall B



Plan of graphics on wall C



Floor plan



Designer taps



Detail of graphic detail on walls



Detail of graphic detail on walls and designer shower head

